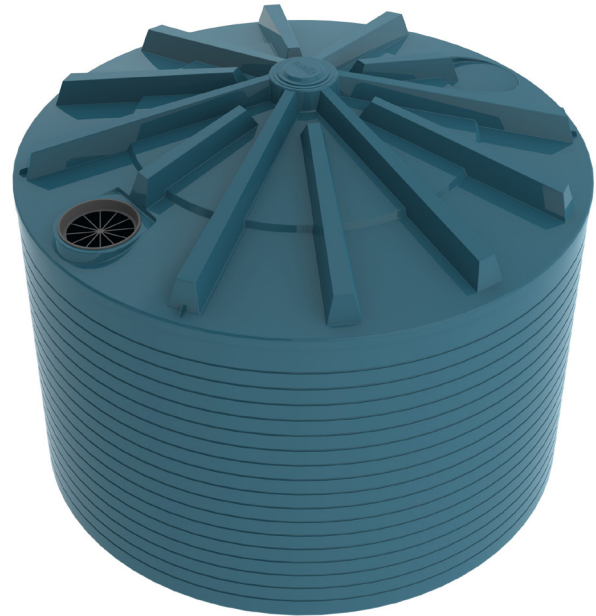


PRODUCT SHEET



Tank as seen in Mountain Blue

DIAMETER	3785 MM
INLET HEIGHT	2660 MM
OVERALL HEIGHT	3040 MM

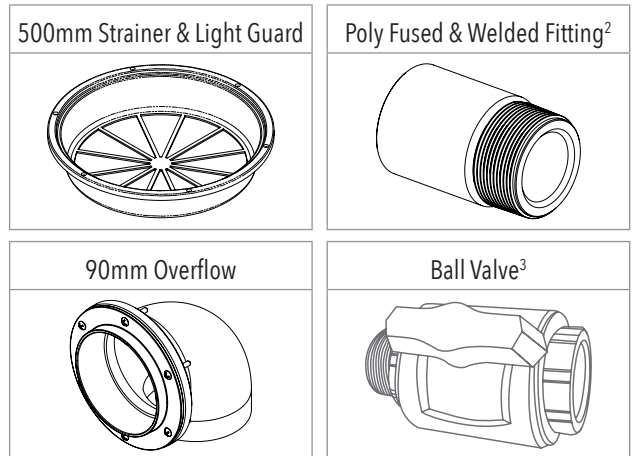
**PRODUCT CODE:
PTRNWA6200**

6,200GAL /28,000L WATER TANK

FEATURES

- Fully self supporting roof (no internal poles or frames)
- Manufactured from proven UV stabilised Australian standard materials (tested in the field for over 25 years)
- Manufactured in computerised ovens (not open flame)
- Ribbed sidewall (extra strength)
- Thicker walls at base (supports pressure)
- Poly fused & welded fittings (stops fitting split)
- Australian made materials (not imported)

FREE INCLUSIONS¹



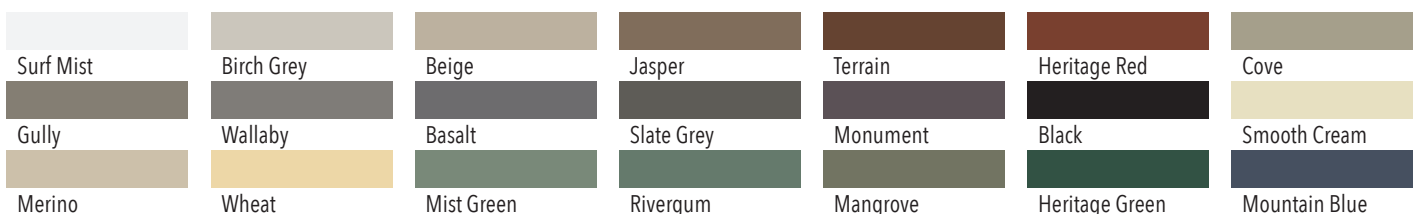
¹ Additional fittings are available on request

² Poly Fused & Welded Fitting sizes are available in 1", 1½" and 2"

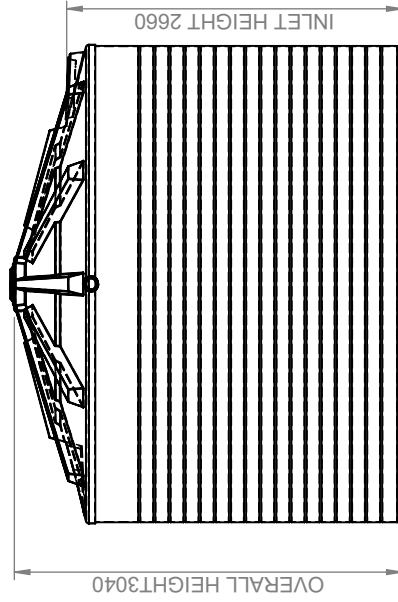
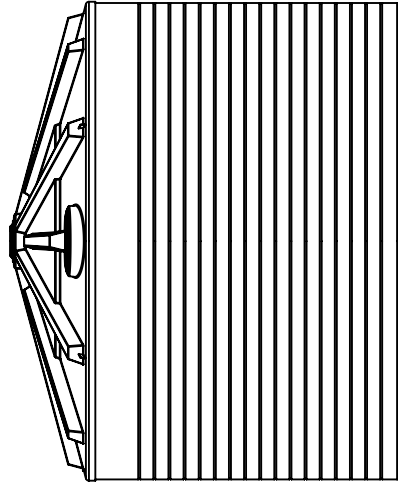
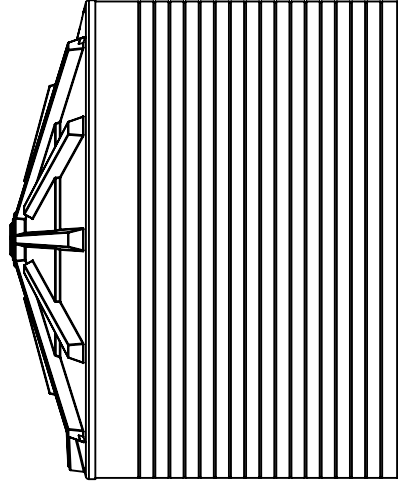
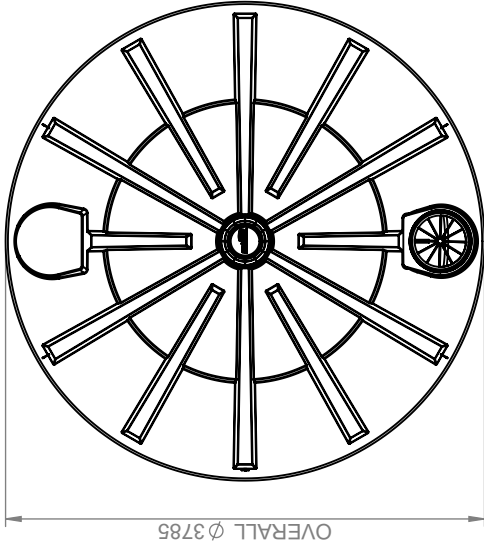
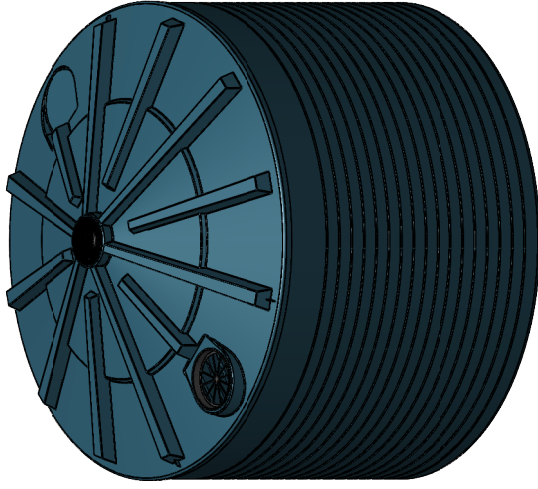
³ Ball Valve sizes are available in 1", 1½" and 2"

*Inclusions may change without notice, check with sales prior to ordering

COLOURS AVAILABLE



NB: Colours may vary due to screen and printer calibrations.



Details

Manufacturer's Name	Nu-Tank Pty Ltd
Tank Capacity	6200 Gallon
Maximum Specific Gravity	1.0
Maximum Design Service Temperature	23 °c
Standard	AS/NZS 4766



PRODUCT CODE:

PTRNWA6200

DESCRIPTION:

6,200 GALLON / 28,000L WATER TANK