

# nu-tank

CLEAN • STRONG • RELIABLE



**QUICK  
PRODUCT GUIDE  
2021-2**



[WWW.NUTANK.COM.AU](http://WWW.NUTANK.COM.AU)



# ROUND WATER TANKS

**NU-TANK'S 10,200GAL ROUND TANK WALLS ARE THICKER - 40% THICKER!**

Nu-Tank's 10,200GAL Water and Molasses tanks are poly banded. Banding is a process where the rib moulds on top of the sidewall creating an outward rib. The 'ribs' mould an additional 40% thicker. Being thicker makes the tank stronger and last longer.

**10,200GAL / 45,995L  
PTRNWA10200**



IH-3200MM D- 4500MM

**6,200GAL / 28,000L  
PTRNWA6200**



IH- 2610MM D- 3700MM

**5,500GAL / 25,000L  
PTRNWA5500**



IH- 2320MM D- 3700MM

**5,000GAL / 22,700L  
PTRNWA5000**



IH- 2275MM D- 3500MM

**4,400GAL / 20,000L  
PTRNWA4400**



IH- 2090MM D- 3500MM

**3,300GAL / 15,000L  
PTRNWA3300**



IH- 2100MM D- 3200MM

**2,200GAL / 10,000L  
PTRNWA2200**



IH- 2200MM D- 2500MM

**2,200GAL / 10,000L SQ  
PTRNWA2200SQ**



IH- 1400MM D- 3200MM

## YOUR 6 POINT TANK CHECKLIST



**AUSSIE MADE  
USING AUSSIE  
MATERIALS**



**RIBBED  
SIDE WALLS**



**POLY FUSED  
& WELDED  
OUTLET FITTING**



**SELF  
SUPPORTING  
ROOF**



**COOKED IN  
COMPUTERISED  
OVENS**



**THICKER  
WALLS AT  
THE BASE**

\*Some tanks may not have all the features. All dimensions may vary by + or - 3%. See website for full details.

Key: IH - Inlet Height, D - Diameter

1,750GAL / 8,000L  
PTRNWA1750



IH- 1800MM D- 2500MM

1,100GAL / 5,000L TL  
PTRNWA1100TL



IH- 2100MM D- 1800MM

1,100GAL / 5,000L  
PTRNWA11005MH



IH- 1470MM D- 2120MM

1,100GAL / 5,000L SQ  
PTRNWA1100SQ



IH- 1160MM D- 2500MM

750GAL / 3,500L  
PTRNWA750



IH- 1670MM D- 1670MM

660GAL / 3,000L  
PTRNWA660



IH- 2095MM D- 1400MM

550GAL / 2,500L  
PTRNWA550



IH- 1000MM D- 1850MM

450GAL / 2,000L  
PTRNWA450



IH- 1850MM D- 1170MM

330GAL / 1,500L  
PTRNWA330



IH- 1350MM D- 1300MM

260GAL / 1,200L  
PTRNWA260



IH- 1270MM D- 1260MM

130GAL / 600L  
PTRNWA130



IH- 1250MM D- 850MM

125GAL / 570L  
PTRNWA125



IH- 1000MM D- 885MM

44GAL / 200L  
PTRNWA44



IH- 925MM D- 600MM

30GAL / 140L  
PTRNWA30



IH- 650MM D- 600MM

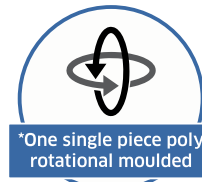
20  
YEAR  
WARRANTY



UV Stabilised Australian Standard Material



Heavy duty construction



\*One single piece poly rotational moulded



AUSTRALIAN  
MADE MATERIALS

# SLIMLINE TANKS

5,000L  
PTSLWA5000



IH- 1900MM L- 2800MM  
W- 1200MM

3,000L  
PTSLWA3000



IH- 2130MM L- 2520MM  
W- 810MM

## KEY

IH - INLET  
HEIGHT  
L - LENGTH  
W - WIDTH

# GREY WATER & SEPTIC

## SEPTIC FEATURES

- Lightweight only 122kg (3200L)
- Foot traffic-able when installed (stops tampering)
- Easy to Transport and install
- Made from UV stabilised polypropylene structural foam (making this the toughest injection moulded tank)
- Supplied as complete kit (including inlet and outlet T-pieces)

4,000L SEPTIC  
SE4000BLK



OH- 2410MM D- 1998MM

3,200L SEPTIC  
SE3200BLK



OH- 2030MM D- 1998MM

1,200L GREY WATER  
PGW1200



OH- 1855MM D- 1100MM

700L GREY WATER  
PGW700



OH- 1060MM D- 1100MM

900L GREY WATER  
PGW900



OH- 1370MM D- 1100MM

## GREY WATER FEATURES

- Child safe access point
- Foot trafficable when installed (stops tampering)
- Heavy duty (constructed for underground use)
- Widened foot design (to eliminate uplift)
- Easily installed
- Adjustable offsets
- Made to last (virgin grade material – Not recycled)
- Optional pumps and grease trap
- Supplied as complete kit (including inlet and outlet T-pieces)

## KEY

OH - OVERALL  
HEIGHT  
D - DIAMETER

# STANDARD TANK FITTINGS



## Cattlemans Fitout



Screwcap Manhole with M+F inlet

## Rainwater Fitout



Strainer and Light Guard



90mm Overflow



Poly Fused & Welded Fitting



Valve (up to 2" standard)



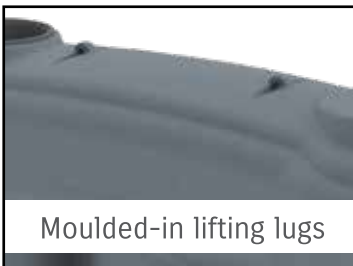
Poly Fused & Welded Fitting



Valve (up to 2" standard)

NB: Tank shown is the PTRNWA3300 Water Tank. Fittings may differ for other styles and sizes of Water Tanks.

# SLIMLINE TANK FITTINGS



Moulded-in lifting lugs



Moulded-in lifting handles



Strainer and Light Guard



Bucket height outlets (1")



90mm Overflow



1" outlet at each end



NB: Tank shown is the PNS3000 Slimline Tank. Fittings may differ for other styles & sizes of Slimline Tanks.

**INTRODUCING...**

**POLY WELDED**

**FITTINGS**



Nu-Tank eliminates fitting split and weak spots by creating a one piece tank and fitting structure by poly fusing and welding the fitting into the tank. The fitting is fused inside the wall of the tank and then welded around the outside, making the tank and fitting become one eliminating fitting 'weak spot' or 'fitting split'.

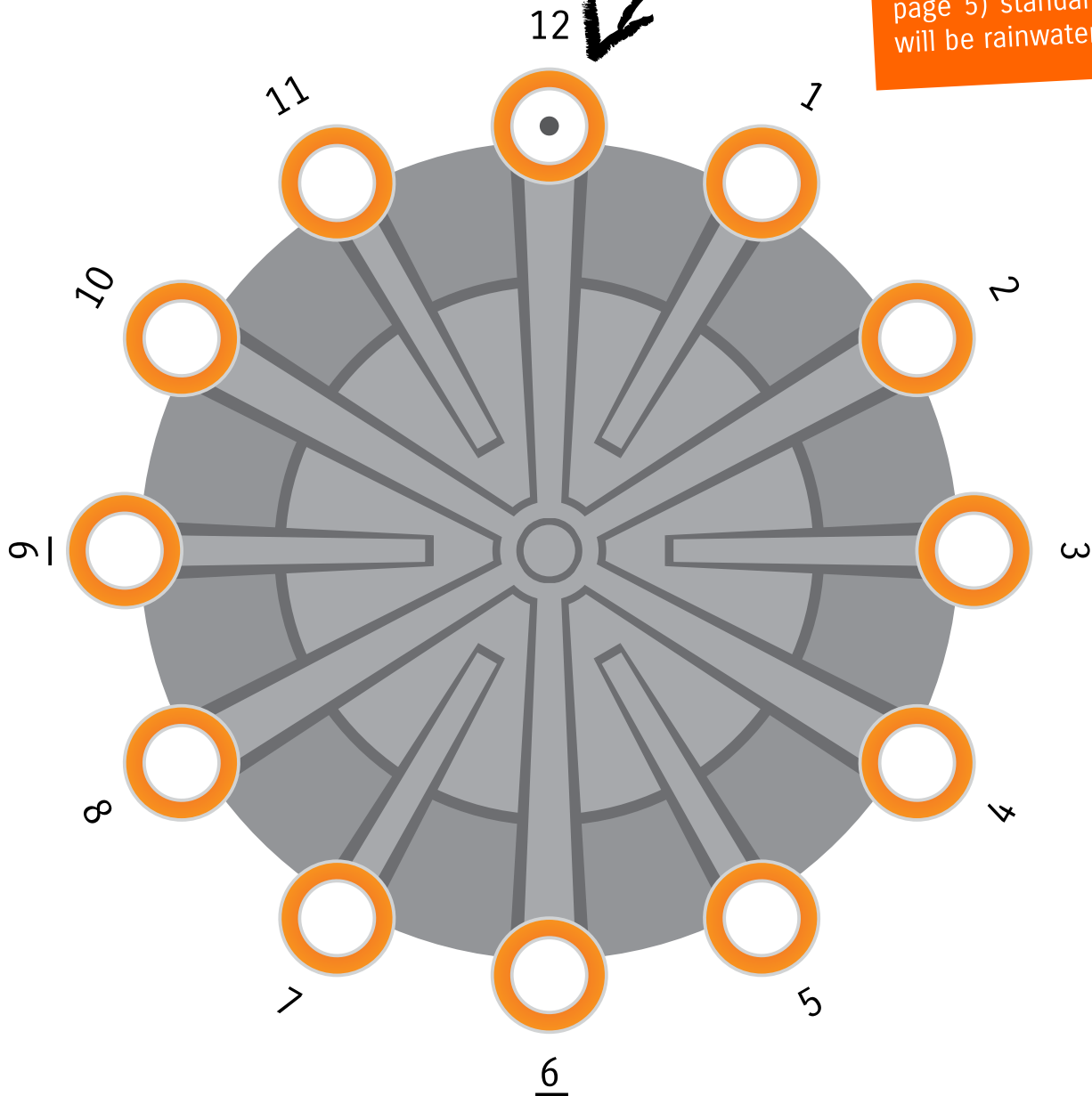
See website for video.

**SAY GOODBYE TO NIGHTMARE SPLITS**



# FITTING GUIDE

NB: If you do not notify us of fitout type i.e. stock or rainwater (see page 5) standard fitout will be rainwater.



Please use the below key to mark your preferences.

● Inlet

X Outlet

= Overflow

## WATER TANKS

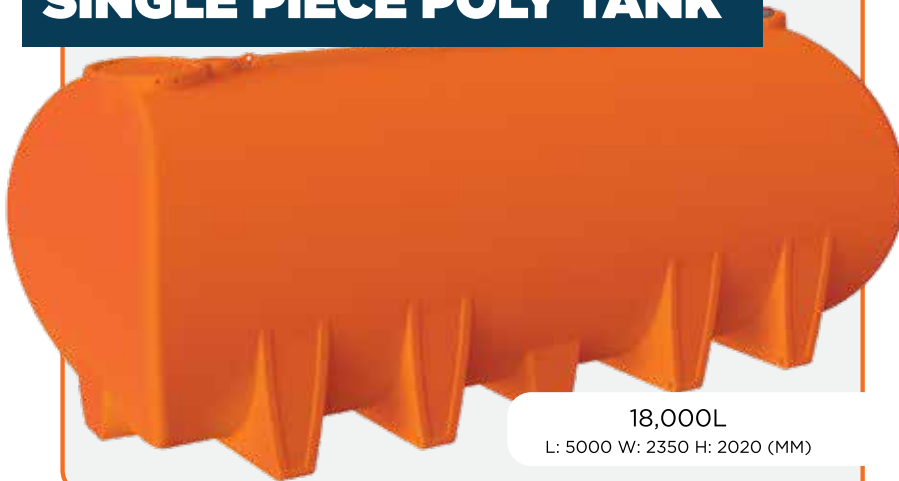
We need to fit an Inlet, Outlet (fitting at the bottom) and Overflow on your tank.

1. We start with the Inlet at 12.
2. From that point, your Outlet can go at any number. (Including 12)
3. Standard size Outlets are 1", 1½" or 2" in size, larger sizes are available although will incur a charge.
4. Your Overflow can go at any other point other than at 12.

# TRANSPORT TANKS



## AUSTRALIA'S BIGGEST SINGLE PIECE POLY TANK



\*All dimensions may vary by + or - 3%.





ORANGE  
**WATER**

BLACK  
**MOLASSES**

BLACK  
**CHEMICAL**

GREY  
**DIESEL**



# MOLASSES TANKS

**NU-TANK'S 10,200GAL  
ROUND TANK WALLS ARE  
THICKER - 40% THICKER!**

Nu-Tank's 10,200GAL Water and Molasses tanks are poly banded. Banding is a process where the rib moulds on top of the sidewall creating an outward rib. The 'ribs' mould an additional 40% thicker. Being thicker makes the tank stronger and last longer.

# Know YOUR truck LOADS

KEY TO HOW MUCH MOLASSES YOUR TANK CAN HOLD



DOUBLE ROAD TRAIN



SEMI TRAILER

**+** THERES STILL  
SPACE TO FILL!

10,200GAL / 45,995L  
PTRNMO10200



MH-3200MM D- 4500MM  
TL -  + 

6,200GAL / 28,000L  
PTRNMO6200



MH-2610MM D- 3700MM  
TL -  + 

5,500GAL / 25,000L  
PTRNMO5500



MH- 2320MM D- 3700MM  
TL - 

3,300GAL / 15,000L  
PTRNMO3300



MH- 2100MM D- 3200MM

2,200GAL / 10,000L  
PTRNMO2200



MH- 2200MM D- 2500MM

2,200GAL / 10,000L  
PTRNMO2200SQ



MH- 1400MM D- 3200MM

1,750GAL / 8,000L  
PTRNMO1750



MH- 1800MM D- 2500MM

1,100GAL / 5,000L  
PTRNMO1100TL



MH- 2100MM D- 1800MM

1,100GAL / 5,000L  
PTRNMO11005MH



MH- 1470MM D- 2120MM

1,100GAL / 5,000L  
PTRNMO1100SQ



MH- 1160MM D- 2500MM

750GAL / 3,500L  
PTRNMO750



MH- 1670MM D- 1670MM

All dimensions may vary by + or - 3%

### FEATURES

- SG Rating 1.6 (2.0 Optional)
- Fully self supporting roof (no internal poles or frames)
- Manufactured from proven Australian standard materials (tested in the field over 25 years)
- Manufactured in computerised ovens (not open flame)
- Ribbed side walls (extra strength)
- Thicker walls at base (supports pressure)
- Poly fused & welded fittings (stops fitting split)

### KEY

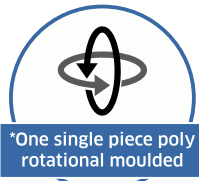
MH - MANHOLE  
HEIGHT  
D - DIAMETER  
TL- TRUCK LOAD



# STANDARD TANK FITTINGS



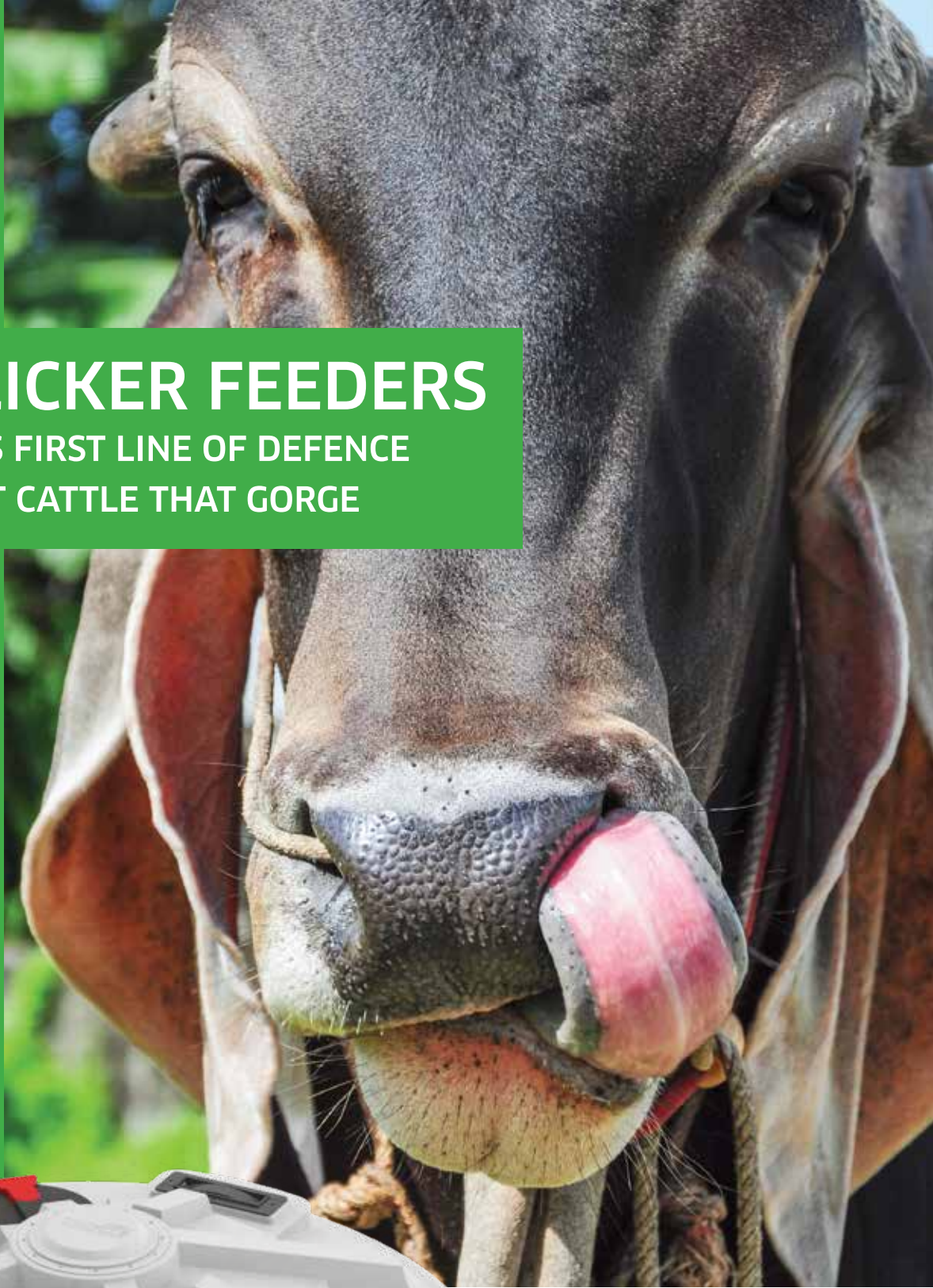
NB: Tank shown is the PTRNMO5500 Molasses Tank. Fittings may differ for other styles and sizes of Molasses Tanks.



# WHEEL LICKER FEEDERS

A FARMERS FIRST LINE OF DEFENCE  
AGAINST CATTLE THAT GORGE

- Heavy duty construction (won't crack or perish)
- Keeps the weather out (feed is protected from the elements)
- Raised trough center (Lick drains to wheels)
- Side fill point (Easy access)
- 4x Licker wheels (allows more cattle to feed)
- Wheels run sideways (cattle's natural licking motion)
- Wheels run to bottom of trough (uses all liquid inside - no leftovers)
- Made to last (virgin grade material - Not recycled)



**600L WHEEL LICKER**

**PFWLMO600**

H- 820MM  
D- 1560MM

**1,200L WHEEL LICKER**

**PFWLMO1200**

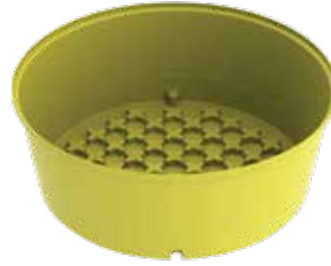
H- 820MM D- 1900MM

# MOLASSES ROUND TROUGHS

## FEATURES

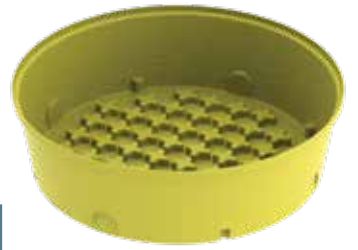
- Patented Safety Tread floor (Allows cattle to get a grip if pushed or fall into trough)
- Unique anti-crack lip design
- Manufactured from proven Australian standard materials (tested in the field over 25 years)
- Stackable for transport and storage
- Easily relocatable
- Heavy duty construction (won't crack or perish)
- Stops moulded in the bottom for stacking (stops suction)

1,500L SAFETY TREAD  
PORNMO1500ST



H - 650MM D - 1840MM

1,000L SAFETY TREAD  
PORNMO1000ST



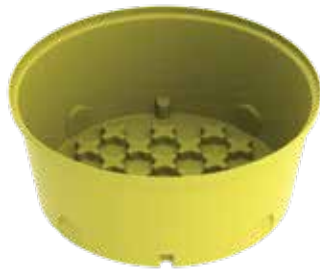
H-500MM D- 1800MM

750L SAFETY TREAD  
PORNMO750ST



H- 530M D- 1495MM

650L SAFETY TREAD  
PORNMO650ST



H- 580MM D- 1350MM

500L SAFETY TREAD  
PORNMO500ST



H- 500MM D- 1285MM

## KEY

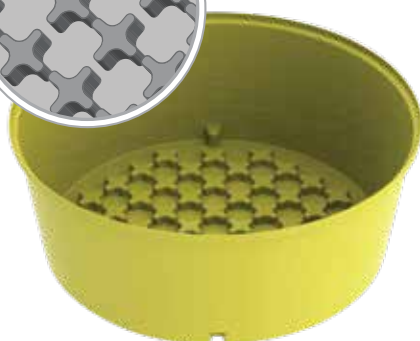
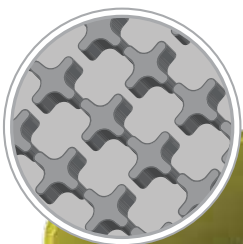
H - HEIGHT  
D - DIAMETER  
W- WIDTH  
L- LENGTH



# AMAZING PATENTED SAFETY TREAD TROUGHS

Keep your animals fed and safe with a Nu-Tank Patented Safety Tread Trough.

Built with a moulded pattern in the floor to help fallen animals regain their footing. Helps prevent injuries and drowning.



**2,500L ROUND  
PORNMO2500FF**



H - 600MM D - 2500MM

**650L ROUND  
PORNMO650FF**



H - 580MM D - 1350MM

**400L ROUND  
PORNMO400FF**



H - 380MM D - 1285MM

**300L ROUND  
PORNMO300FF**



H - 300MM D - 1200MM

**200L ROUND  
PORNMO200FF**



H - 300MM D - 1050MM

**50L ROUND  
PORNMO50FF**



H - 300MM D - 600MM

**FEATURES**

- Unique anti-crack lip design
- Manufactured from proven Australian standard materials (tested in the field over 25 years)
- Stackable for transport and storage
- Easily relocatable
- Heavy duty construction (won't crack or perish)
- Stops moulded in the bottom for stacking (stops suction)

# FEEDERS

**DRY LICK FEEDER FEATURES**

- Tow-able frame design for short distances over suitable ground when empty
- Galvanised frame
- Manufactured from virgin Grade Material (not Recycled)
- Roof and trough can be Purchased individually

**300L DRY LICK  
PFDLOT300**



H- 1830 W- 2050MM  
L - 2350MM

**650L DRY LICK  
PFDLOT650**



H- 1830 W- 2050MM  
L - 2350MM

## KEY

H - HEIGHT TH- TROUGH HEIGHT  
D - DIAMETER  
L- LENGTH



**ROLLER DRUM FEATURES**

- Collapsible frame design
- Tow-able frame design for short distances over suitable ground when empty
- Hot Dipped Galvanised frame
- Manufactured from virgin Grade Material (not Recycled)
- Roof and trough can be purchased individually

**150 ROLLER DRUM  
PFRDMO150**



IH- 1400MM D- 3200MM

**6,200L FEEDER  
PFSFMO6200**



H- 2400MM D- 2500MM  
TH - 600MM

**6,200 FEEDER FEATURES**

- Stores and feeds molasses, supplements
- Saves time & money. Fill direct in the paddock
- Floating feed ring with individual feed ports controls intake
- 6,200L Storage capacity
- Manufactured from virgin grade materials (not recycled)
- Stainless Steel butterfly valve with extended handle for ease of filling

# ROUND WATER TROUGHS

2,000L SAFETY TREAD  
PORNWA2000

## WATER TROUGH FEATURES

- Patented Safety Tread floor (Allows cattle to get a grip if pushed or fall into trough)
- 2" Low pressure float valve & large 3" drain
- Float cover extends to bottom of trough (stops tampering when filling)
- Unique anti-crack lip design
- Raised float cover allows trough to fill
- Heavy duty construction (won't crack or perish)
- Manufactured from virgin grade materials (not recycled)
- Smooth internal surface for easy cleaning
- Stackable for transport and storage
- Easily relocatable



H- 610MM D- 2320MM

## KEY

H - HEIGHT  
D - DIAMETER

1,000L ROUND FLOAT  
PORNWA1000

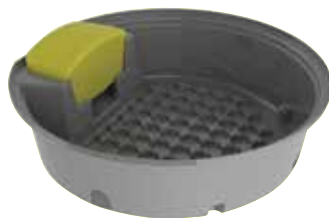
650L ROUND FLOAT  
PORNWA650

250L ROUND FLOAT  
PORNWA250

SAFETY  
TREAD



H- 550MM D- 1785MM



H- 550MM D- 1450MM

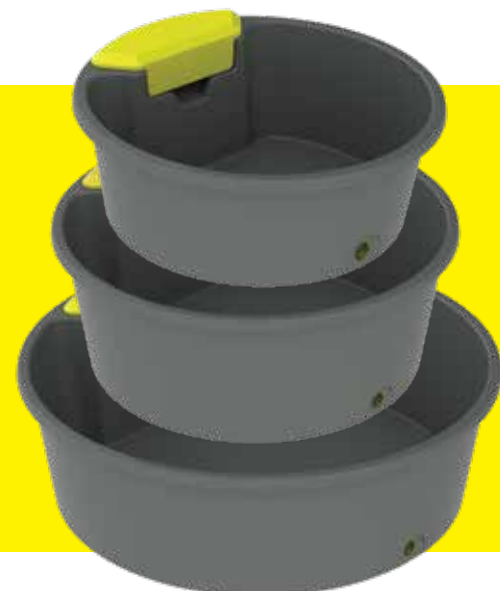


H- 420MM D- 1100MM

## FEATURES

- 1" High pressure float valve (all poly construction – No corrosion or clogging)
- Secured float cover (stops stock tampering)
- All pipe and connections protected in trough recess
- Unique rounded lip trough design (extra Strength)
- Heavy duty construction (will not crack)
- Manufactured from virgin grade materials (not recycled)
- Smooth internal surface for easy cleaning

**STACK-EM**  
**FOR EASY TRANSPORT**  
LONG AND ROUND MODELS  
ARE STACKABLE!





# LONG WATER TROUGHS

**750L SAFETY TREAD**  
POLNWA750

## 750L SAFETY TREAD TROUGH FEATURES

- Patented Safety Tread floor (Allows cattle to get a grip if pushed or fall into trough)
- 2" Low pressure float valve & large 3" drain
- Float cover extends to bottom of trough (stops tampering when filling)
- Unique anti-crack lip design
- Raised float cover allows trough to fill
- Heavy duty construction (won't crack or perish)
- Manufactured from virgin grade materials (not recycled)
- Smooth internal surface for easy cleaning
- Stackable for transport and storage
- Easily relocatable



H- 510MM L- 2350MM  
W - 910MM

## KEY

H - HEIGHT  
D - LENGTH  
W - WIDTH

**1,150L LONG FLOAT**  
POLNWA1150

**500L LONG FLOAT**  
POLNWA500

**350L LONG FLOAT**  
POLNWA350

**100L LONG FLOAT**  
POLNWA100



H- 530MM L- 3000MM  
W - 1085MM



H- 400MM L- 2200MM  
W - 780MM



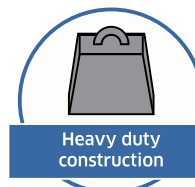
H- 360MM L- 2200MM  
W - 600MM



H- 370MM L- 760MM  
W - 550MM

## LONG FLOAT TROUGH FEATURES

- 1" High pressure float valve (1.5 & 2 optional)(500L, 350L 100L models)
- 2" Low pressure float valve ( 1150L model)
- Unique anti-crack lip design
- Large 3" drain
- Float and cover can be on end or in center
- Raised float cover allows trough to fill
- Heavy duty construction (won't crack or perish)
- Manufactured from virgin grade materials (not recycled)
- Smooth internal surface for easy cleaning
- Stackable for transport and storage
- Easily relocatable



# FIRE FIGHTING SLIP ON UNITS

**UV STABILISED  
TANK  
(20 YR WARRANTY)**

**FULLY  
BAFFLED**

**PRESSURE  
RELIEF VALVE**

**HONDA  
GX200  
450L/MIN  
PUMP**

## **SIZES AVAILABLE**

2,000L  
.....  
1,500L  
.....  
1,200L  
.....  
1,000L  
.....  
800L  
.....  
600L  
.....  
400L  
.....

**20M HOSE &  
SPRING REWIND  
REEL**

**HEAVY DUTY  
ALLOY FRAME**

**GET  
READY FOR  
FIRE SEASON**

**THIS UNIT IS GREAT FOR DUST SUPPRESSION**



# DIESEL TRANSFER TANKS

FULLY  
BAFFLED

## SIZES AVAILABLE

- 6,000L
- .....
- 5,000L
- .....
- 4,000L
- .....
- 3,000L
- .....
- 2,400L
- .....
- 2,000L
- .....
- 1,500L
- .....
- 1,200L
- .....
- 1,000L
- .....
- 800L
- .....
- 600L
- .....
- 400L
- .....

MOUNTING  
SYSTEM



SWIVEL TO  
PREVENT HOSE  
TANGLES

AUTO  
SHUT-OFF  
NOZZLE

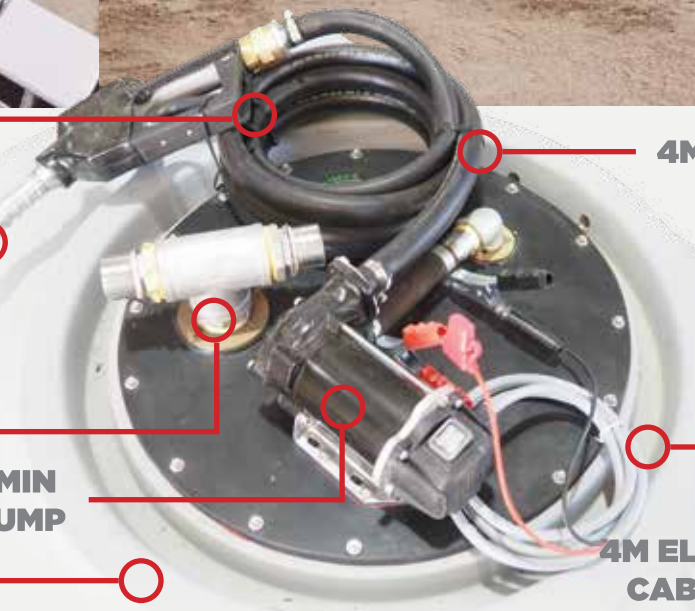
SPLASH RESISTANT  
BREATHER

50L/MIN  
12V PUMP

EARTH  
STRAP

4M HOSE

4M ELECTRICAL  
CABLE WITH  
BATTERY CLIPS



**PORTABLE DIESEL SOLUTIONS  
NOW INSTORE**



210L



200L



100L



**HAVE THE CONVENIENCE OF BOTH WITH THE  
400L COMBO TANK  
WITH BOTH DIESEL AND ADBLUE®**

## FEATURES

- Lockable lid
- In-moulded tie down points
- Auto shut-off nozzle
- Forklift entry channels
- Drain Plug
- 4m hose

400L

500L

1000L

**ADBLUE® OPTIONS  
AVAILABLE IN 100L & 200L**



# ON FARM DIESEL SOLUTIONS NOW INSTORE

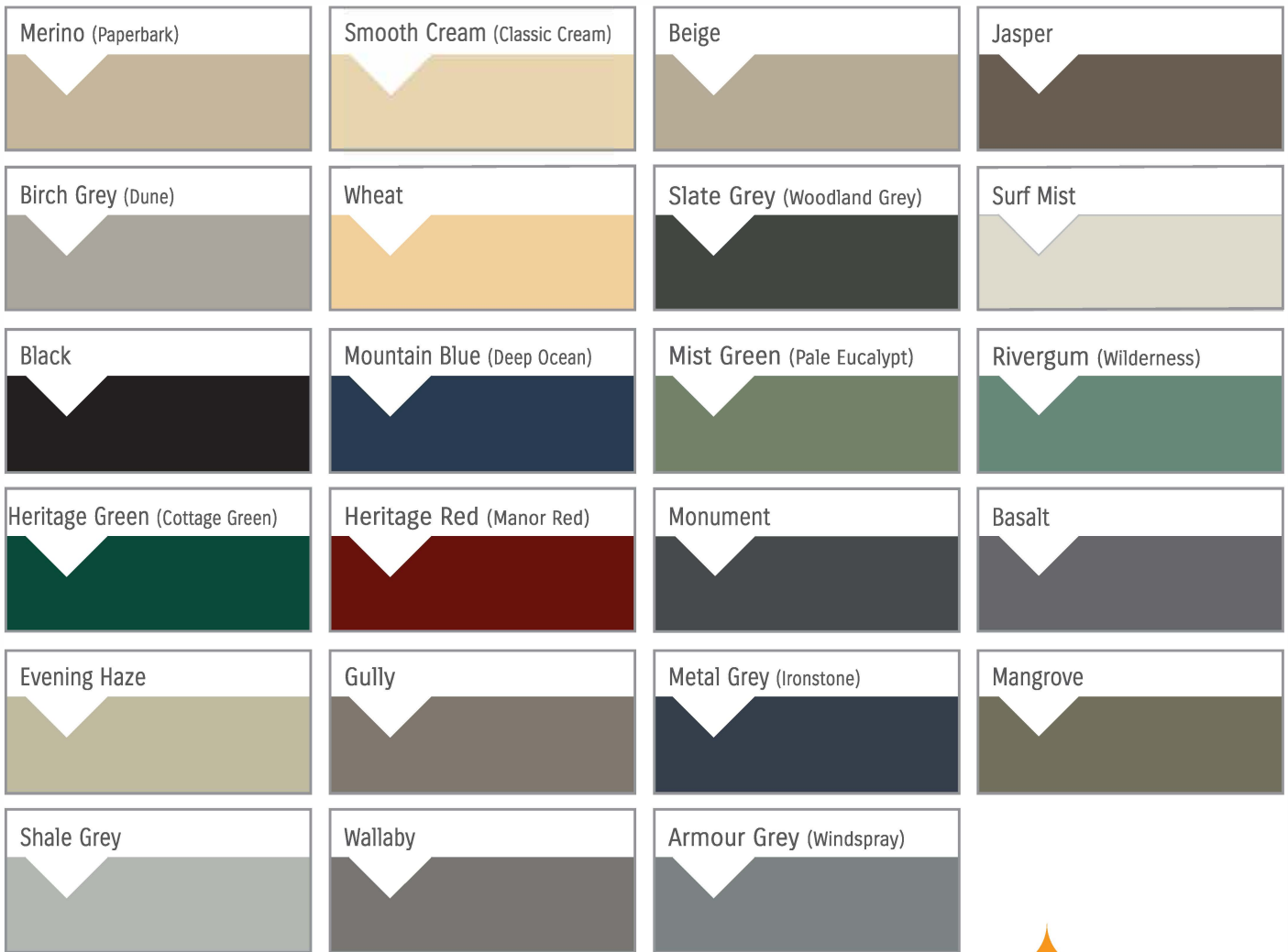


## DIESEL SLIP-ON





# WATER & SLIMLINE TANK COLOURS



## DID YOU KNOW?

Our colours are matched to the COLORBOND® range. Ask our friendly sales staff for help matching the right colour when you order. COLORBOND® and @colour names are registered trademarks of BlueScope Steel Limited. ™ colour names are trademarks of BlueScope Steel Limited. Note: Colours are representations only, shade variation may occur due to printing conditions.

**nu-tank**  
CLEAN • STRONG • RELIABLE



**0437 309 990**

**81 Mountney Road, Sarina QLD**

**4737 [www.ballardindustrial.com.au](http://www.ballardindustrial.com.au)**